

# SMITHFIELD POLICE DEPARTMENT COMMUNITY NEWSLETTER

Issue 7, March 2012

---

## A MESSAGE FROM THE CHIEF

---

**Rte.116 Stillwater Viaduct Project:** The George Washington Highway bridge (just north of Farnum Pike) is scheduled to be closed on Monday, March 26, 2012 through November of 2012. This means that many motorists will be seeking alternative routes. The Smithfield Police Department and the Smithfield Traffic Safety Commission have been taking steps to mitigate the impact on surrounding areas. The “official” detour redirects northbound Rte.116 (Pleasant View Avenue) traffic north on Farnum Pike, then south on Douglas Pike (see map). This adds about 7 minutes to travel times. Southbound Rte.116 traffic follows this route (reversed), but also has the option of Rte.295 south to Rte.44. Despite the establishment of an official detour route, it is likely that unofficial shortcuts and cut-through roads will become the primary choice of motorists familiar with the area. The Police Department and Town Hall have already fielded some concerns from residents, and 1.) Rogler Farm Road to Brayton Road, 2.) Capron Road to Stillwater Road to Thurber Boulevard, 3.) Capron Road to Stillwater Road to Limerock Road, and 4.) Whitman Avenue to Fenwood Avenue to Whipple Road have been identified as the four routes that will see the highest increase in traffic. Passive measures, such as speed bumps on Stillwater Road (in the area of house numbers #289 and #169), have already been approved. Also approved were stop signs on Whipple Road (at Ridge Road) and Stillwater Road (at Thurber Boulevard). These should collectively calm some of the problems; however, roads such as Capron Road and Rogler Farm Road (for example) will need to be consistently monitored by police, as they are more prone to excessive speed. The police department will be assigning numerous traffic posts to these roads. This traffic disruption and its anticipated problems are the police department’s primary focus for traffic enforcement during the upcoming weeks and months. Our variable messaging sign (VMS) will be used for the duration of the project to notify motorists that the speed limit will be strictly enforced, and to expect increased enforcement. Additionally, the VMS records traffic data on speed and volume throughout the day, allowing us to periodically evaluate roadways to determine if our presence



needs to be increased, maintained, or allocated elsewhere. During this time, the most valuable input we receive will be from residents. Please feel free to forward your comments and concerns to [traffic@smithfieldpd.com](mailto:traffic@smithfieldpd.com). Copies of these emails will be forwarded to me as well as Sergeant Gerald Pezzullo, *Traffic Services Coordinator*. Sgt. Pezzullo will continue to work closely with RI Department of Transportation to ensure that the concerns of our residents are being addressed. Hopefully, this information sheds some light on our planned response and is consistent with what you expect from the Smithfield Police Department.

Richard P. St.Sauveur, Jr.  
*Chief of Police*

---

*“To be recognized as the most professional, well respected, highly trained, proactive, community-oriented law enforcement agency in Rhode Island.”*

SMITHFIELD POLICE DEPARTMENT **VISION STATEMENT**

---

---

## RECENT EVENTS

---

---

**High School Citizens' Police Academy:** On March 19<sup>th</sup> of this year, the department graduated another High School Citizens' Police Academy. The Academy was a seven-week program designed to provide participants with an insight into police operations. While attending the academy, participants were introduced to a wide variety of department functions. The academy was developed to encourage youths to learn more about their police department and



provide an overview of the law enforcement profession. The academy was offered free-of-charge to Smithfield High School students or any Smithfield resident attending another high school.



**Holiday Gift Program:** The department would like to thank everyone who donated to our annual Holiday Gift Program. We would also like to thank the many merchants from the Smithfield Crossing who allowed us to place a collection bin in their stores. This year we were able to donate several hundred gifts of toys and clothing to needy families here in Smithfield and across the State.

**Female Self Defense Course:** On March 7<sup>th</sup>, the police department began its five-week *Female Self-Defense Course*. The program is not intended to turn participants into martial arts experts, rather it is geared to educate participants on how to avoid being targeted and what action to take if selected as a victim. Participants are Town residents or business owners, who are at least 16 years of age. This course meets each week for two hours



**Special Olympics Torch Run Plunge:** Members of the police department dove into the cold waters of Goddard Park, and helped raise nearly \$33,000 for Special Olympics Rhode Island. Chief St. Sauveur, Officer Orlando Braxton, and Officer Kyle Phillips took part in the 5<sup>th</sup> Annual Special Olympics Torch Run Plunge. Special Olympics Rhode Island, year-round, is devoted to sports training and competition for children and adults with intellectual disabilities. If you would like to participate next year please contact Special Olympics RI at (401) 349-4900. You can also get more information on their website:

<http://www.specialolympicsri.org/>.





---

---

## ONGOING & UPCOMING EVENTS

---

---

**Parenting Series:** The Smithfield Public Schools, the Libraries of Smithfield and the Smithfield Police Department have collaborated to provide the Smithfield community with a series of parenting skills workshops and seminars designed to help develop healthy habits and cultivate pro-social behavior in our children and students. The first work shop was Wednesday, March 21<sup>st</sup> from 7:00-8:30pm at the Smithfield High School. It was entitled, **“Sleep and Learning: Looking at Sleep as Children Grow,”** presented by: Dr. Mary Carskadon, *E.P. Bradley Hospital Sleep and Chronobiology Research Lab.*



The next workshop is planned for May 16<sup>th</sup>. The presenter is Johanna Corcoran of Familytopia. She will be presenting a workshop called, **"Glass Half Full: Raising Happy Kids."** It is also going to be at the High School, in room 108, from 7:00-8:30pm. For a more detailed description, visit her website at [www.myfamilitopia.com](http://www.myfamilitopia.com). **Who should attend?** Parents, teachers, grandparents, and/or adult caregivers of children from preschool through grade 12. There is no cost to attend this event.

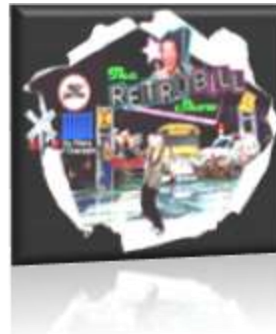
R.S.V.P. to [parenting-series@smithfieldri.com](mailto:parenting-series@smithfieldri.com).

**Retro Bill:** On Thursday April 5th, 2012, the Smithfield Police Department's Community Policing Unit and the Smithfield School Department are inviting back *Retro Bill*. Retro Bill is a highly sought after children's safety, self-esteem and anti-bullying expert, who has been featured on television and radio programs worldwide. He is currently the most in-demand K-12th

grade student assembly speaker in the United States and Canada. The Retro Bill shows were very well-received by our students several years ago, and we are bringing him back for 3 shows - one school show for our 4th & 5th graders to be held at the High School, one school show for Gallagher Middle School students, and a final evening show open to the entire community. Each show is unique and tailored to the different audiences, and there is **NO COST TO ATTEND**. We hope to see you there.

### **Public Show:**

Thursday April 5<sup>th</sup>, 2012 - 6:30PM  
Smithfield High School



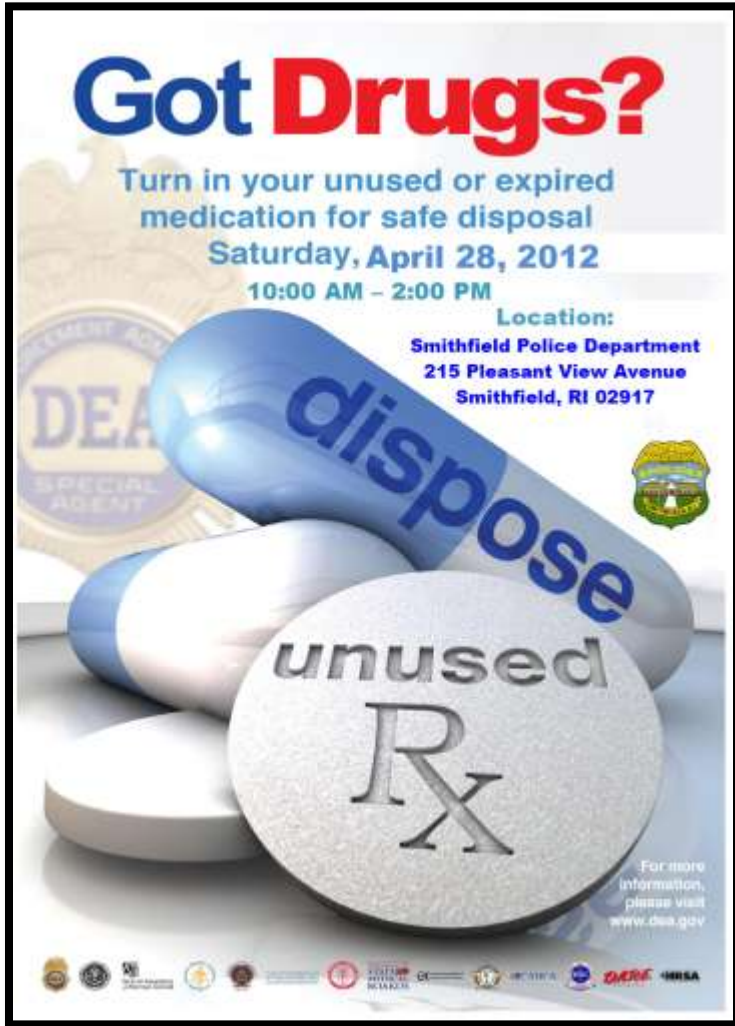
**DEA's Prescription Drug Takeback Day (IV):** This April the Police Department will take part in the *National Prescription Drug Take Back Day*. The purpose of this National Take Back Day is to provide a venue for persons who want to dispose of unwanted and unused prescription drugs. These events were a huge success in removing potentially dangerous prescription drugs, particularly controlled substances, from our nation's medicine cabinets. There were approximately 3,000 state and local law enforcement agencies throughout the nation that participated in past events.

---

*"To be recognized as the most professional, well respected, highly trained, proactive, community-oriented law enforcement agency in Rhode Island."*

SMITHFIELD POLICE DEPARTMENT **VISION STATEMENT**

This is a great opportunity for those who missed the previous events in September and April of last year, at which the Department collected over **40 pounds of prescription medication at each event.** This upcoming event will take place, Saturday April 28, 2012, from 10AM to 2 PM, at the Smithfield Police Department.



---

## CRIME PREVENTION TIPS

---

All auto break-ins usually have one thing in common: *there was something left in the car worth stealing.* Most larcenies from cars are "crimes of opportunity" that could be prevented by taking some preventative steps.

- **Do not leave valuables in your vehicle:** You would be surprised how often this happens, but individuals leave valuable items in plain sight all the time. If you leave items in your vehicle and they are visible, the chances your vehicle will get broken into increase greatly.

- **Place items out of sight BEFORE reaching your destination:** Someone may be watching when you put your valuables under a seat or in the trunk. The moment you leave your vehicle, a thief could break into it. So place those items in a safe place before you get to the park, beach, baseball game, etc. Valuable items that thieves target are GPS units, MP3 players, credit cards, money, packages and so forth. If you cannot take the items with you, secure them in a safe place in your vehicle, like a locked glove compartment or your trunk.
- **Avoid leaving packages or shopping bags out in the open:** Lock them into your trunk, if you have to leave the vehicle unattended. Never open a trunk, fill it full of valuables, close it, and then just walk away.
- **Lock ALL of your vehicle's doors:** This is true even if you plan on only being gone for *just a second.* Remember, it only takes seconds to steal items from your car. It is not uncommon, for thieves to walk down row of parked vehicles, looking for unlocked doors. Also, make sure car windows are not left open.
- **Park in busy, well-lit areas:** Pick a parking spot where there is a lot of activity. Auto thieves prefer breaking into cars in isolated areas.
- **Do not leave a trace:** Do not leave any sign that there might be valuables "out of sight" in your vehicle. For example: the suction cup on your dashboard, might tell thieves, that you have a GPS system in your vehicle.
- **Leave nothing in plain view:** Very few auto break-ins are *random.* The thieves usually see something out in the open or hints of possible hidden valuables.
- **Alarms or anti-theft devices work:** Thieves are usually looking for the *easiest* target. If your car has an alarm, it could act as a deterrent. But do not make this common mistake: Just because you have an alarm, doesn't mean thieves won't break-in, IF you leave valuable items in plain sight.
- **Do not leave spare keys in your vehicle:** An experienced thief knows all the hiding places. Store spare keys elsewhere, possibly your wallet or purse.

---

Although many of these tips refer to parking lots, much of the same advice applies to parking and securing your vehicle at home in your own driveway.

---